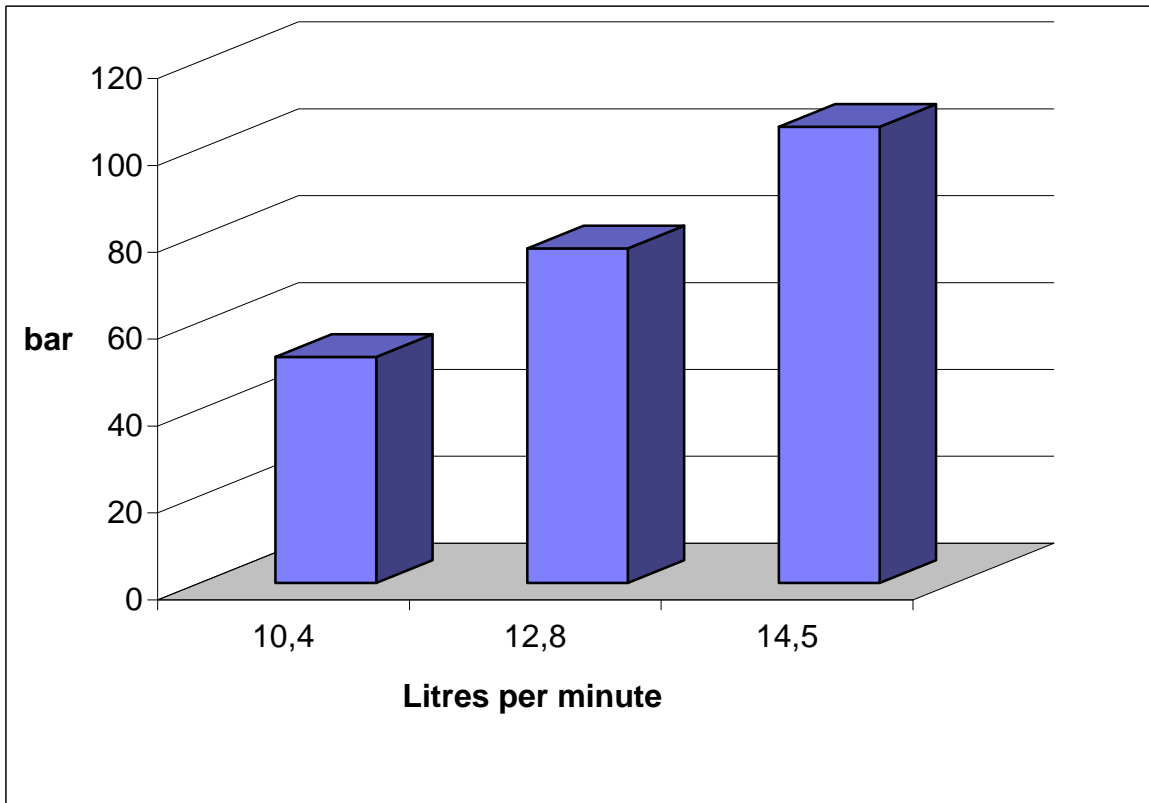



**Flow Rate of Rotary cleaning Nozzles**



Turbine p/n <b>63 - 410</b> Bore in m/m 2 X 1,2 ; 2 X 1,0	on DP 1.3				
		bar	<b>50</b>	<b>75</b>	<b>100</b>
		avg / rpm	7,500	8,500	9,500
		lt / min	<b>10,4</b>	<b>12,8</b>	<b>14,5</b>

**NOTE** : Turbine end = straight female thread 1/8 BSP